

Welcome to **PINE RIVERS ART GALLERY**

A Social Guide



You can read this story to get ready for a trip to the Pine Rivers Art Gallery.

In this story you will learn about what we can find inside the Gallery and about some of the people who work there that can help with your visit.

THE ENTRY

Our main entrance is located via the Officeworks carpark and has glass sliding doors. They open automatically.

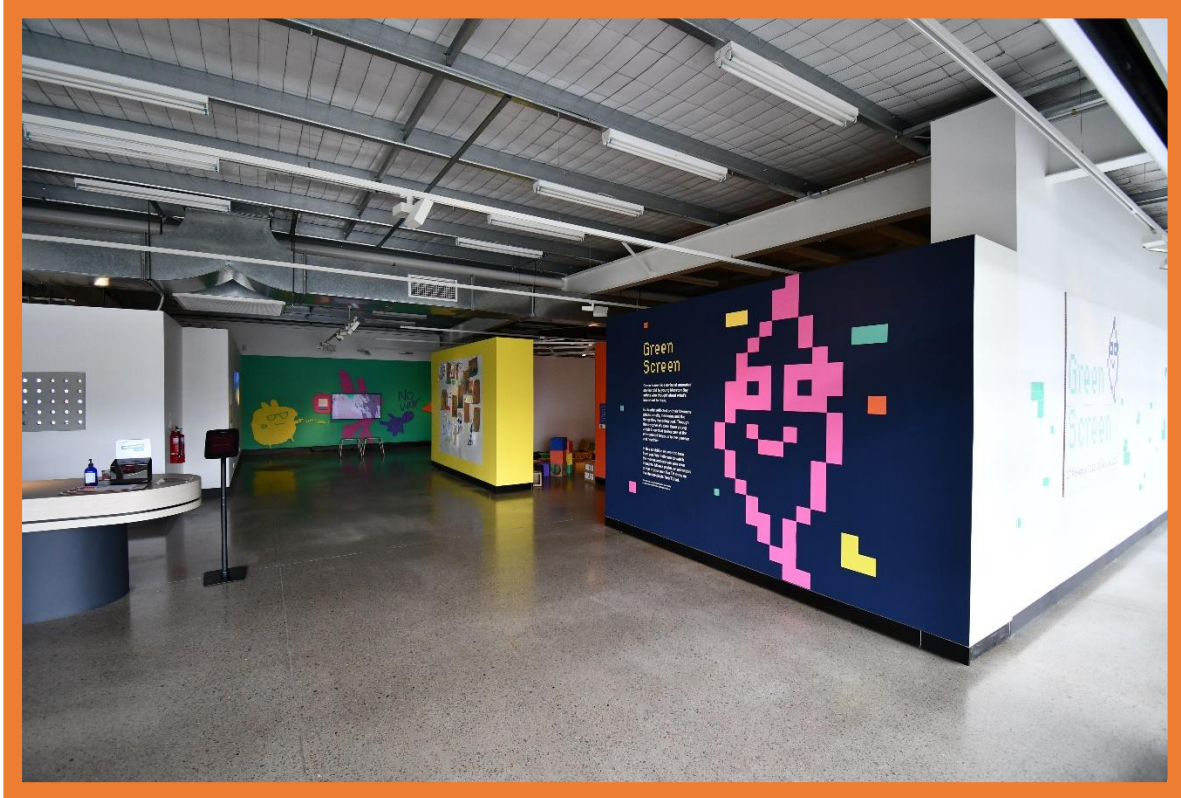
Here is the view from the carpark.



The Gallery is assessible to all different levels of mobility. All the gallery spaces are wheelchair friendly. For those with mobility issues there are disabled carparkks at the Officeworks end of the carpark. There is a ramp next to these carparkks. To access the Gallery entrance please make your way along the walkway towards Gympie Road. The Gallery is the last entry along the walkway.



As soon as you enter the building from our entrance, you will enter the Gallery space.



WHAT YOU CAN FIND AT THE FRONT DESK

There is a front desk at the entrance of the Art Gallery. Here you will be greeted by our friendly team members and can ask them for information about current exhibitions and programs.

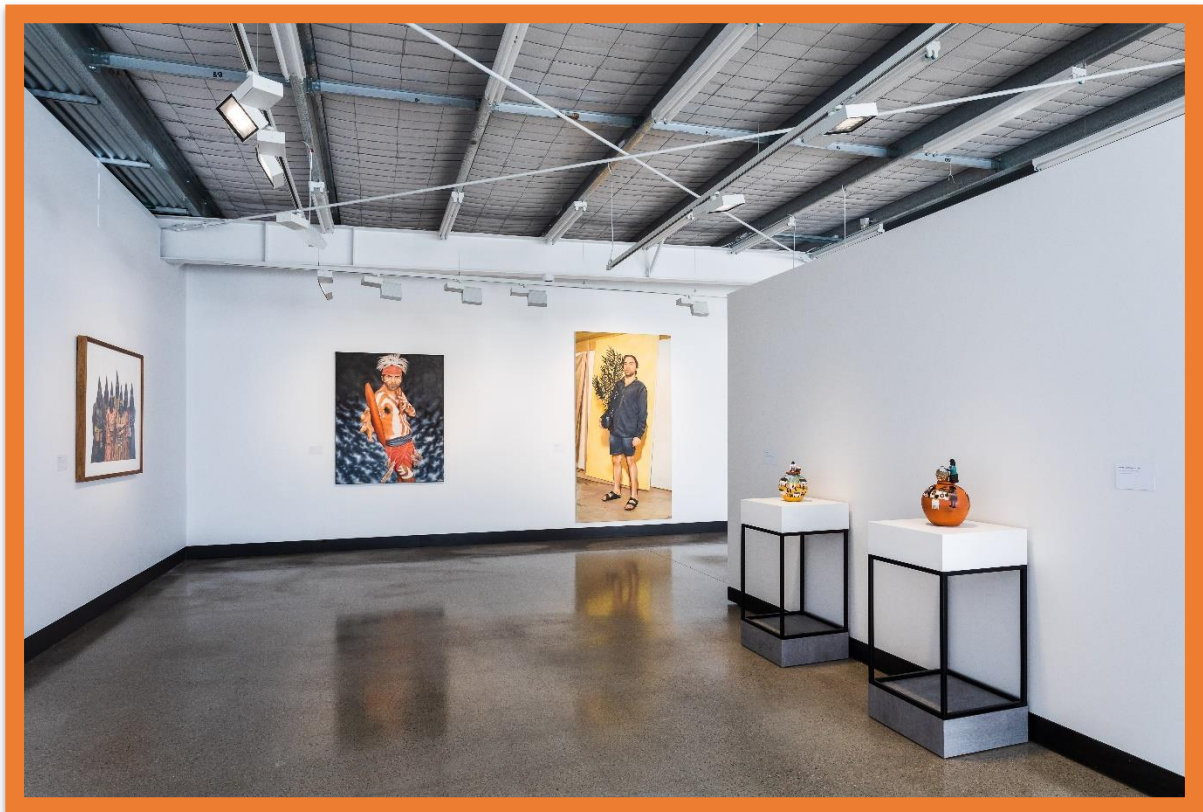


INSIDE THE GALLERY

Inside the gallery, you will see more team members. Here you can ask questions about the artworks and have a chat with them.

THE GALLERY SPACE

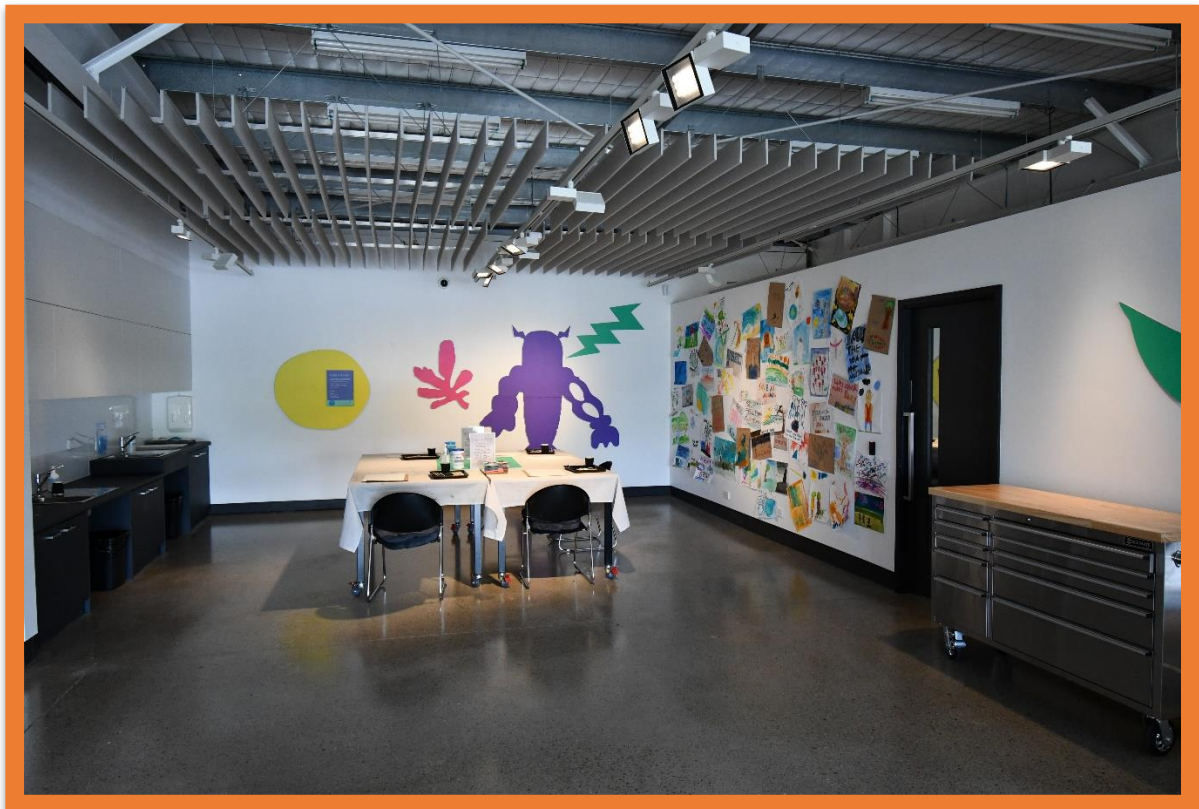
Our Gallery is the large space on the right as you enter. This changes layout for each exhibition. The gallery looks like this.



We have lots of different types of artworks that might be displayed in an exhibition such as: paintings, drawings, sculptures, photography, pottery and video art.

EDUCATION SPACE

We also have an interactive area to the left of the entry that sometimes has activities to take part in or more artworks to see. You may even watch a video in here.



THINGS TO REMEMBER

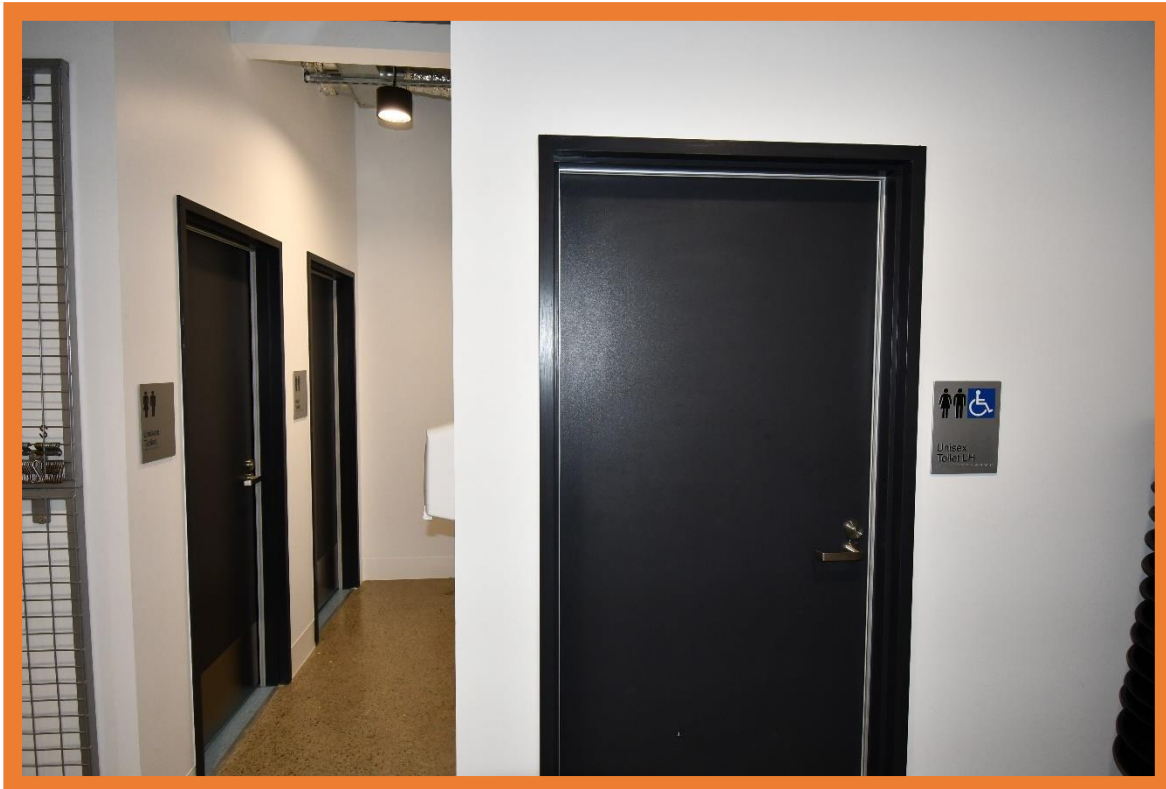
There are some important things to remember when entering the Gallery.



1. Please do not touch the artworks. Not touching the artwork or display cases in the Gallery will help keep the artwork safe and clean.
2. Please walk when in the Gallery. If you run, you might knock over an artwork or someone else, so please walk while looking at the art.
3. You can bring a water bottle with a closed lid into the Gallery, but all other drinks and food must stay inside a bag or outside the Gallery. You can leave your bag with our friendly staff if you want to.

AMENITIES

If you need to use the bathroom, you can find it off our hallway.
Staff can direct you.



The accessible bathroom location is marked with the following sign on the wall.



If at any time you need assistance or emergency attention, you can ask or notify a team member. Team members are first-aid trained and able to call for further assistance if needed.

THINGS TO DO

Some of the fun things you can go to at the Gallery are:

Exhibition Openings: These are when the Gallery celebrates a new exhibition with morning or afternoon tea, guest speakers and other events depending on what it is about.

Art Workshops: There are different workshops organised for adults and children throughout the year.

Artist Talks: The Gallery likes to invite experts to come to the Gallery and discuss different topics relevant to the exhibitions.

Group Tours: The Gallery caters for groups to have personal tours of the exhibitions in the different spaces.

You can ask our Gallery staff members for more information about any of these events or check our website.

WHERE CAN YOU GO IF YOU NEED MORE INFORMATION?

If you have any feedback or questions about access to the Pine Rivers Art Gallery:

Phone: (07) 3480 3905

Email: PineRivers.Gallery@moretonbay.qld.gov.au

Address: 130-134 Gympie Road, Strathpine QLD 4500

Website: www.moretonbay.qld.gov.au/Galleries-Museums/Locations/Pine-Rivers-Gallery